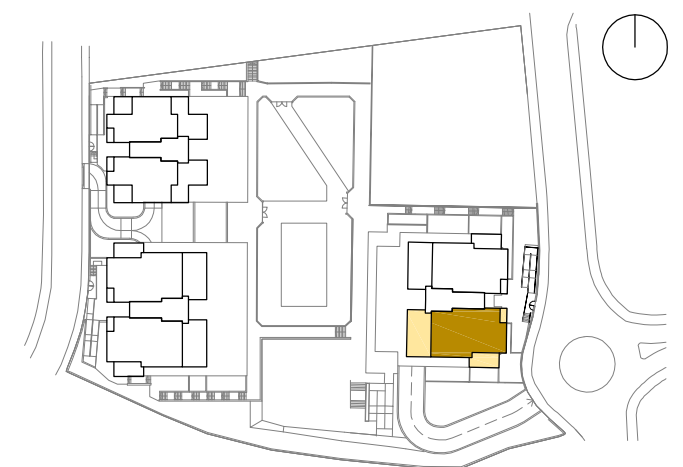




BLOCK D5. PENTHOUSE FLOOR 'LEFT'

3R+3B	
Uncovered terrace	142,80 m ²
Covered terrace	14,50 m ²
Constructed area	205,52 m ²



The present document has strictly informative character. It may suffer variations for technical, legal and/or urban requirements. The furniture is purely informative. All measurements are approximate.

GRAPHIC ESCALE



PROJECTS:



PROMOTES:



BLOCK D5. PENTHOUSE FLOOR 'LEFT'

3R+3B

Uncovered terrace	142,80 m ²
Covered terrace	14,50 m ²
Constructed area	205,52 m ²



The present document has strictly informative character. It may suffer variations for technical, legal and/or urban requirements. The furniture is purely informative. All measurements are approximate.

GRAPHIC ESCALE



PROJECTS:



PROMOTES:

