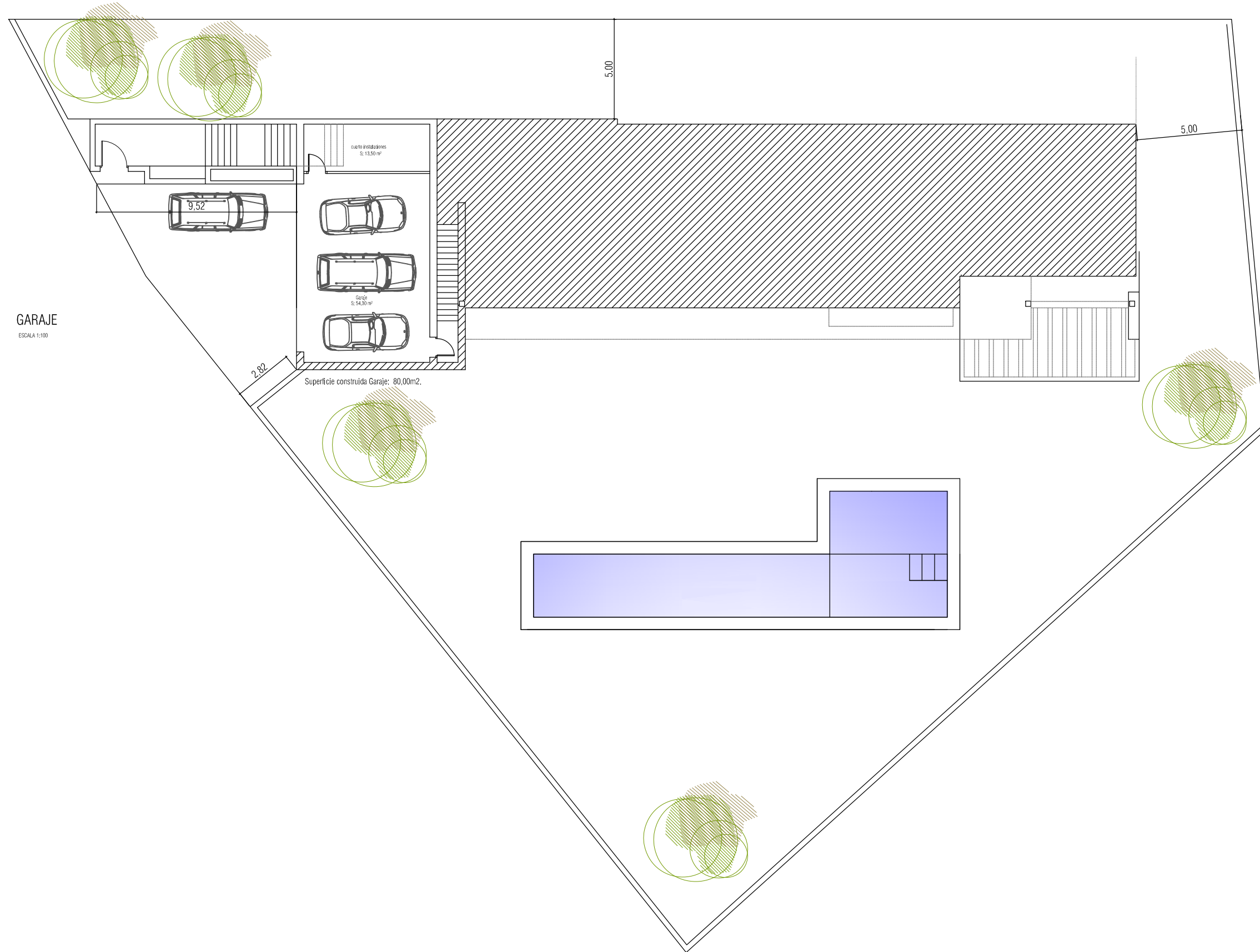


# Semisotano

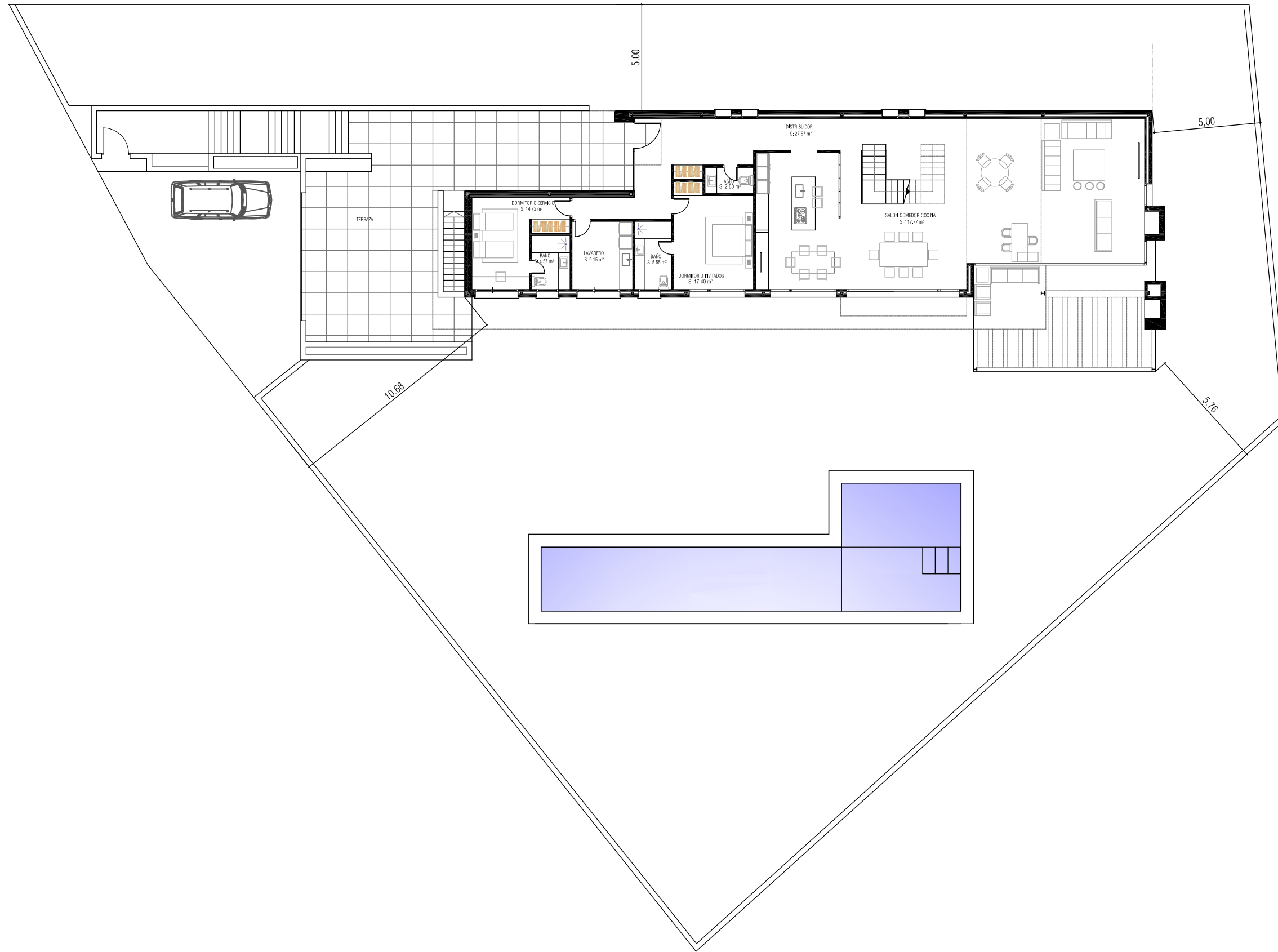


GARAJE  
ESCALA 1:100

# EMPLAZAMIENTO

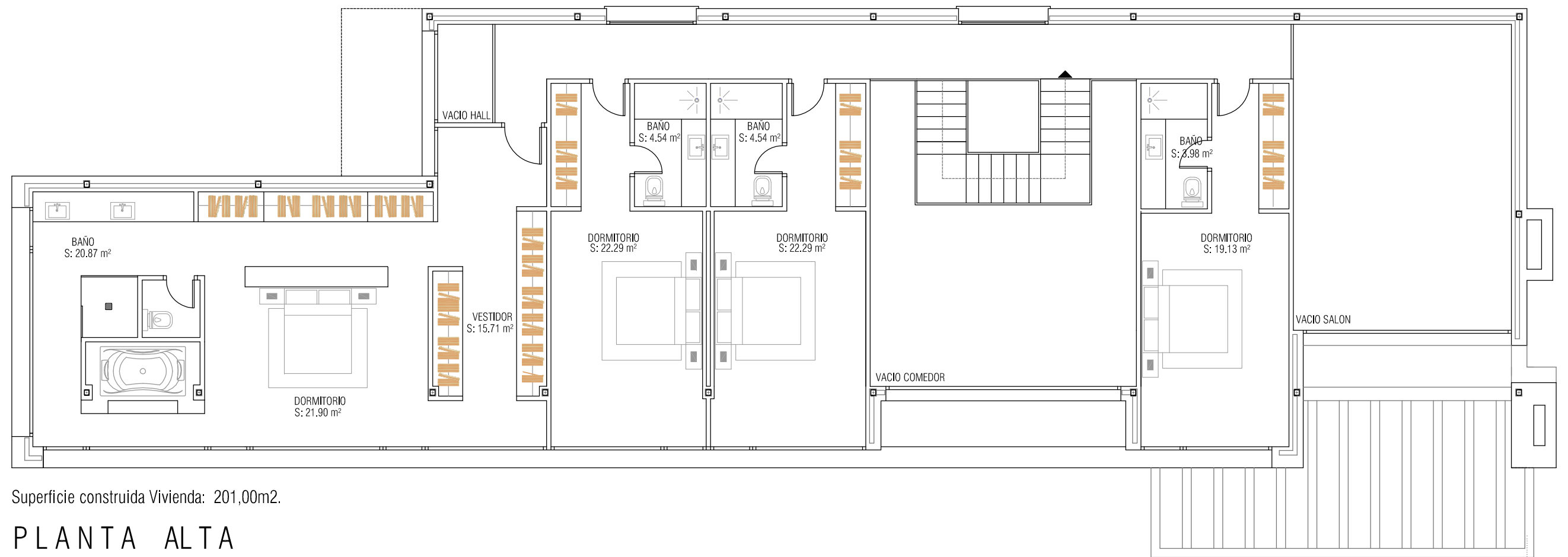
ESCALA 1:200

# planta baja



## EMPLAZAMIENTO

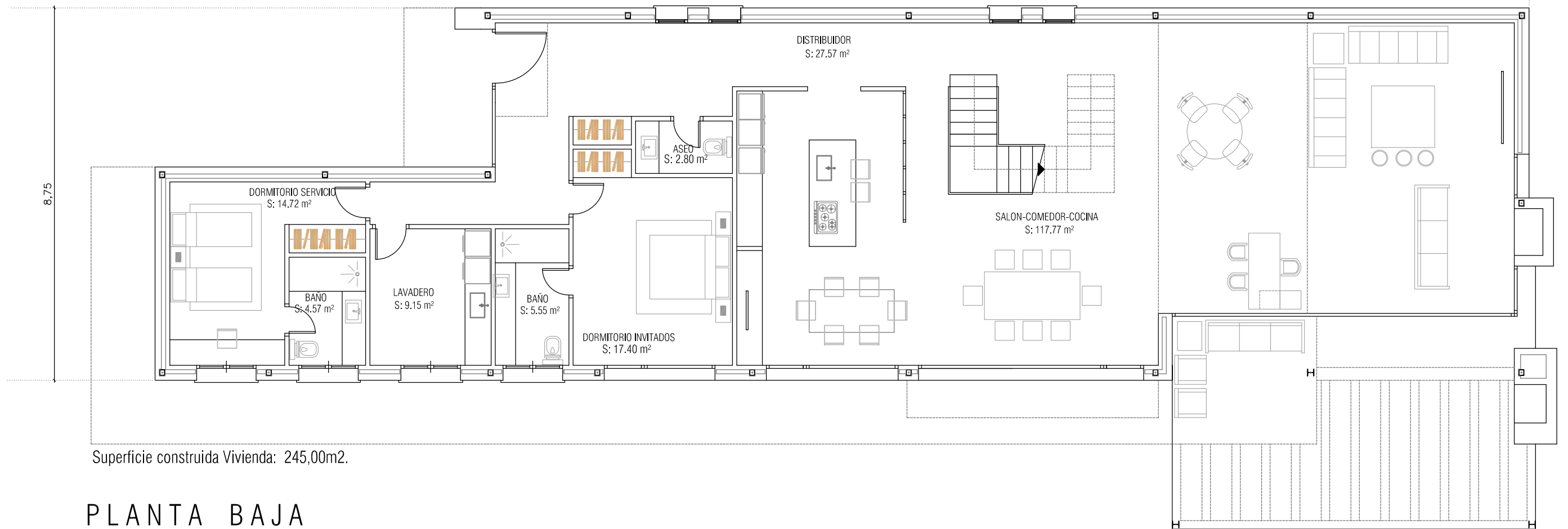
ESCALA 1:200



Superficie construida Vivienda: 201,00m2.

## PLANTA ALTA

32,30



Superficie construida Vivienda: 245,00m2.

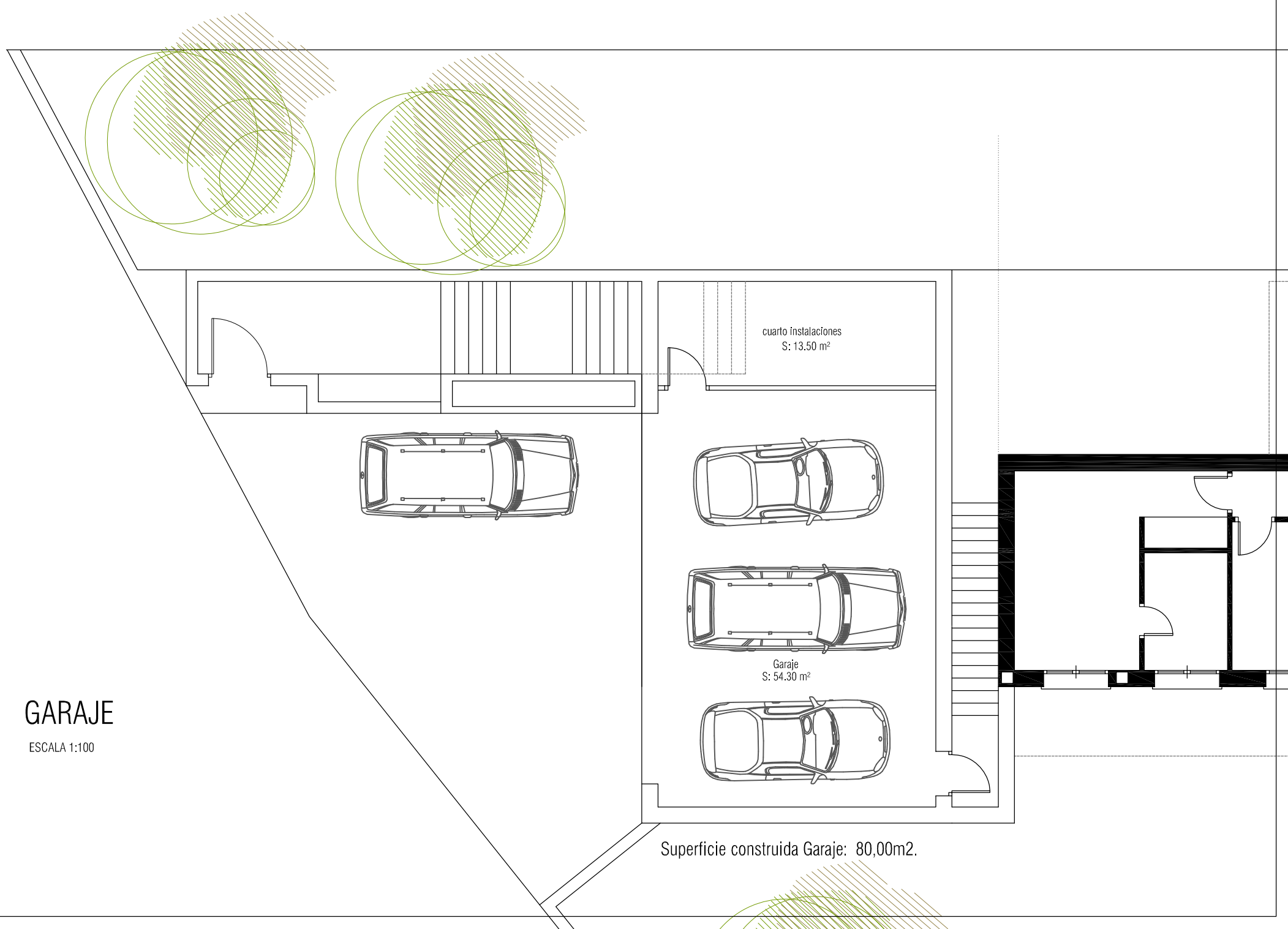
## PLANTA BAJA

ESCALA 1:100

8,75

# GARAJE

ESCALA 1:100



cuarto instalaciones  
S: 13.50 m<sup>2</sup>

Garaje  
S: 54.30 m<sup>2</sup>

Superficie construida Garaje: 80,00m2.

